

# Hybrid Solar Inverter

CELLCRONIC

Galaxy-12K-3P-HY-Version-10G-Pro Plus

## Heavy Duty Inverter

“Seamless Three-Phase Power—Strong, Smart, and Always On.”



### Smart solutions for a sustainable future

A Three-Phase Hybrid Solar Inverter delivers powerful, balanced energy management by combining solar, battery, and grid sources for uninterrupted performance. Built for heavy loads and industrial reliability, it ensures maximum efficiency and seamless power supply in every condition.

- ✓ Reducing electricity bills
- ✓ Increasing energy independence
- ✓ Contributing to environmental sustainability
- ✓ Supports heavy loads



#### Protection Degree IP 65

Designed with an IP65 protection rating for dustproof and waterproof performance.



#### Can Run 8 Air Conditioner

Inverter can run 6 air conditioners along with the rest of the home load effortlessly



#### Works as on-grid & off-grid

Supports seamless switching between on-grid and off-grid modes for uninterrupted power.



#### 5 Years Standard warranty

Inverter comes with a 5-year standard warranty. It can be extended up to 10 years.



# First Time in India.....



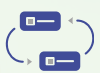
## Heavy Duty

Heavy Duty Hybrid inverter launch in India



## Air Conditioner

A 12kw model can run 8 AC with home load



## <5ms

Inverters come with <5ms Switching time.

20

## Parallel

20 Inverters can parallel with different capacity inverters



## Earthing

Neutral to Ground earthing relay introduced for off-grid operation

09

## Time of use

9 time of use function introduced for battery Charging/ Discharging



## Voltage and Ampere

Function arrive to change Solar Voltage and Ampere acceptance in inverter solar input.



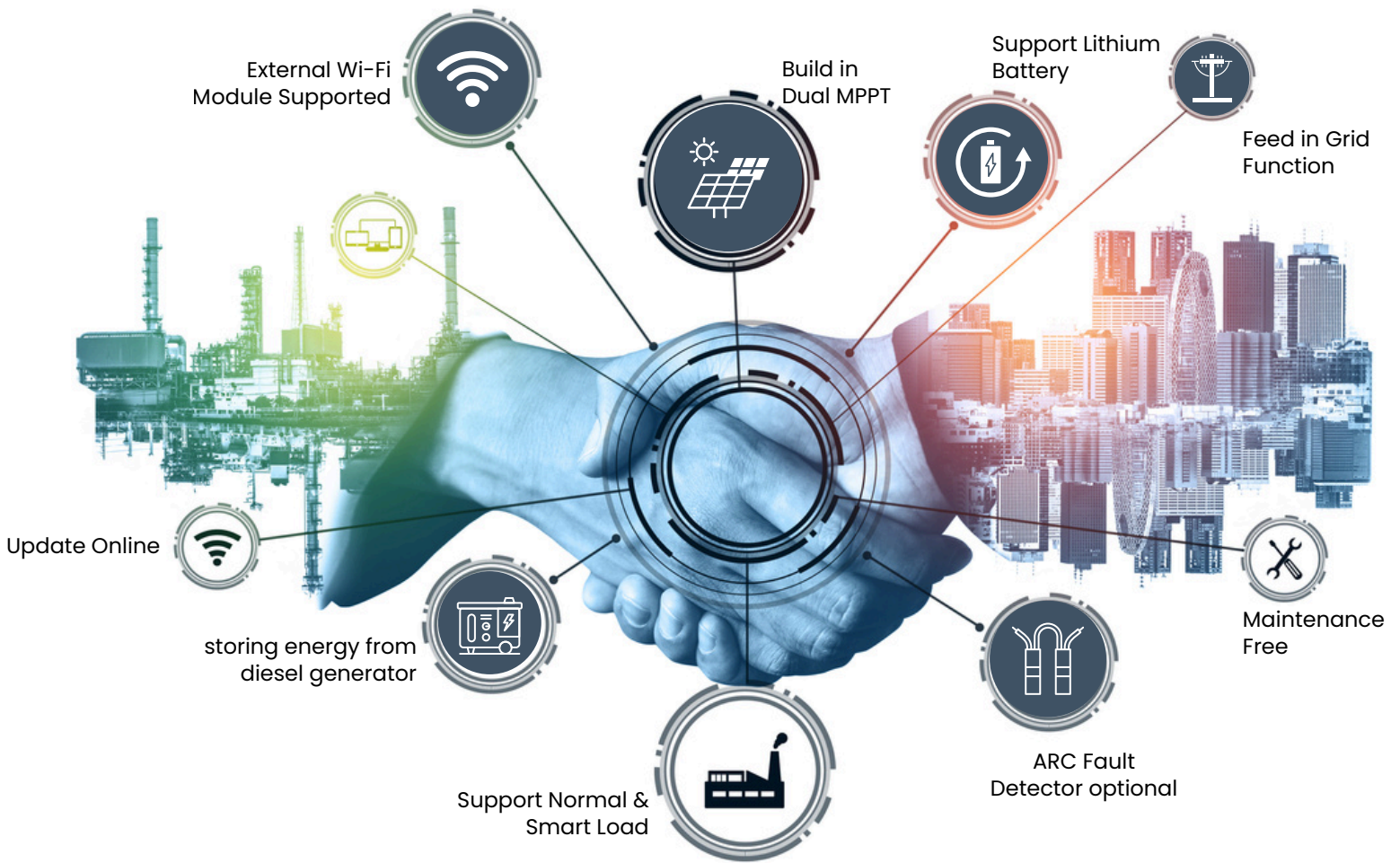
## AC charging

can set AC charging percentage different from whole charging percentage to save bill.

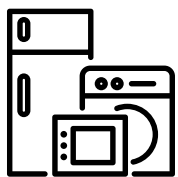


## Battery Charging

DC to DC converter introduce in Inverter to charge battery separately from extra solar DC power.

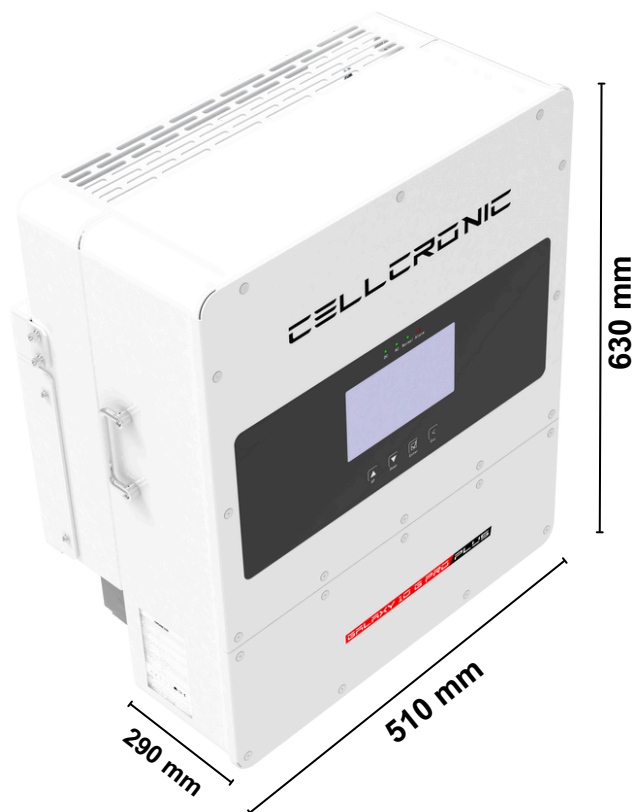


Colorful 7-inch Touch LCD Screen



100% unbalanced output  
each phase max. output  
up to 5kW





Pure Sine Wave Output



Track Generation on Mobile



5 Years Warranty



45Kg Weight



Wall- Mounted



Suitable for Home Inside  
& Outside

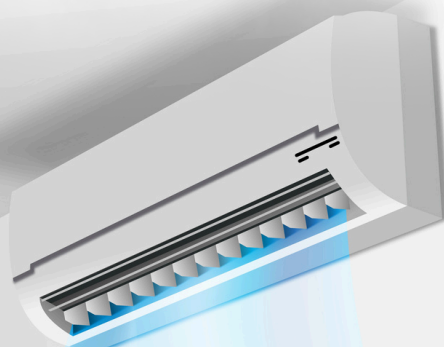
DIMENSION (mm): 510W×630H×290D

# 22000W

Max. PV Input Power

## 34A+20A

Max. PV Input Current



# 15400W

Max. AC Output Apparent Power

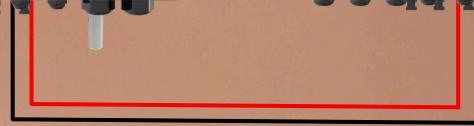
Capable of running **8 Air Conditioner**  
units along with the rest of your  
home load.





12Kw

14Kw



Support different power inverters parallel connection



Max. Charging/Discharging  
current of 280A



# Technical Data

[www.cellcronic.com](http://www.cellcronic.com)

Model	Galaxy-12K-3P-HY-Version-10G-Pro Plus Hybrid Inverter
Battery Input Data	
Battery Type	Lead-acid or Lithium-ion
Nominal Battery Voltage	48
Battery Voltage Range (V)	40~60
Max. Charging Current (A)	280
Max. Discharging Current (A)	280
Number of Battery Input	1
Charging Curve	3 Stages/Equalization
External Temperature Sensor	Optional
Charging Strategy for Li-Ion Battery	Self-adaption to BMS
PV String Input Data	
Max. PV Input Power (W)	22,000 W
PV Input Voltage (V)	650 (160V-800V)
Start-up Voltage (V)	160V
MPPT Voltage Range (V)	200V-700V
Full Load DC Voltage Range (V)	260~650
Max. PV Input Current (A)	26A+17A
Max. Short-Circuit Current (A)	34A+20A
No.of MPP Trackers	2
No.of Strings per MPP Tracker	2/1
AC Input/Output Data	
Rated AC Input/Output Active Power (W)	12000
Max. AC Input/Output Apparent Power (VA)	15400
Rated AC Input/Output Current (A)	17.4
Max. AC Input/Output Current (A)	26
Max. Continuous AC Passthrough (grid to load) (A)	26A
Peak Power (off grid)	2 time of rated power, 10 S
Power Factor Adjustment Range	> 0.99 @rated power (Adjustable 0.8 LD - 0.8 LG)
Rate Input/Output Voltage(V)	230/400Vac(Triple phase)
Rated Input/Output Grid Frequency/Range(Hz)	45Hz-55Hz/55Hz-65Hz (Adjustable)
Grid Connection Form	3L+N+PE
Total Current Harmonic Distortion THDi	THD<3%(Linear load <1.5%)
DC Injection Current	<0.5% In
Efficiency	
Max. Efficiency (PV to AC)	97.9%
Euro Efficiency (PV to AC)	97.0%
MPPT Efficiency	99.0%
Equipment Protection	
Integrated	PV Input Lightning Protection, Anti-islanding Protection, PV String Input Reverse Polarity Protection, Insulation Resistor Detection, Residual Current Monitoring Unit, Output Over Current Protection, Output ShortedProtection
Surge Protection Level	TYPE II(DC), TYPE II(AC)
Interface	
Display	LED, LCD
Communication	RS485/CAN (for BMS), RS485 (for Meter), DRMs, CAN (for parallel), 2*DO, 2*DI, USB (for Wi-Fi/LAN, optional)
General Data	
Operating Temperature Range (°C)	-45~60,>45 Derating
Relative Humidity	0-100%
Max. Operation Altitude	4000m (>2000m derating)
Inverter Topology	Non-Isolated
Over Voltage Category	OVC II(DC), OVC III(AC)
Type of Cooling	Smart Cooling
Communication with BMS	RS485; CAN
Weight (kg)	45 Kg
Cabinet Size (WxHxD mm)	510W×630H×290D
Ingress Protection(IP) Rating	IP65
Installation Style	Wall-Mounted
Grid Regulation	CEI 0-21,VDE-AR-N 4105,NRS 097,IEC61727,G99,G98,VDE 0126-1-1,RD 1699,C10-11
Safety / EMC Standard	IEC/ED 62109-1 IEC/EN 62109-2,IEC/EN 61000-6-1,IEC/EN 61000-6-2, IEC/EN 61000-6-3, IEC/EN 61000-6-4
Warranty	5 Years Standard & upto 5 Years expendable